

# FLEXIROAM X

## Setup Guide

### 1 DOWNLOAD FLEXIROAM X APP

Create an account or login



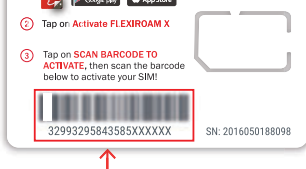
### 2 LINK MICROCHIP

Open app → Tap *Link Starter Pack*



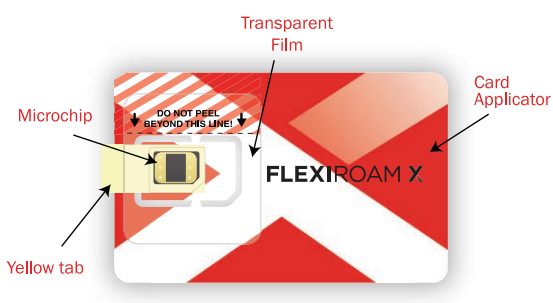
**Link Starter Pack**

Received your Starter Pack?

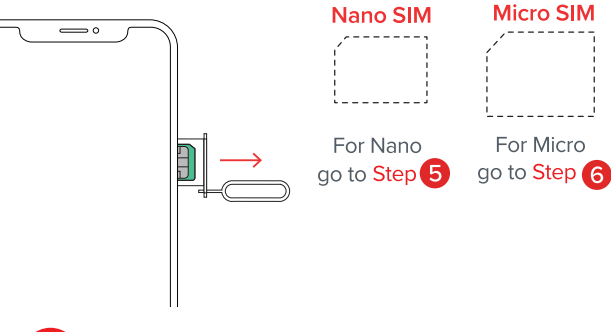


Scan the barcode on your card

### 3 FOLLOW IN APP GUIDE (Recommended) OR INSTRUCTIONS HERE

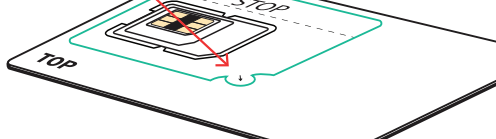


### 4 EJECT SIM, CHECK SIM SIZE

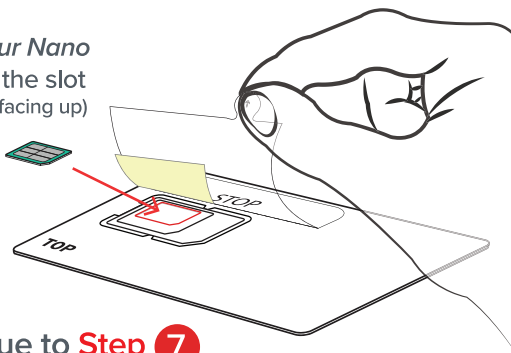


### 5 NANO SIM STICKING GUIDE

Lift the transparent film *from this edge* until you reach **the STOP line**



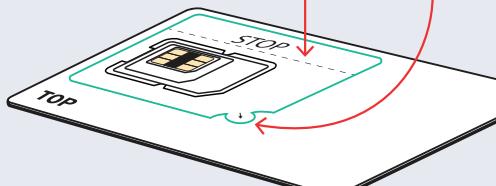
Insert your Nano SIM into the slot (Gold chip facing up)



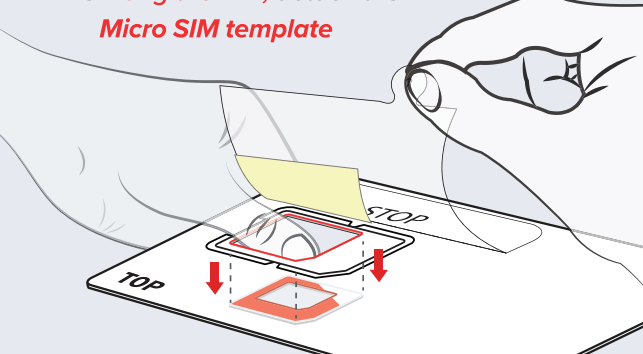
Continue to **Step 7**

### 6 MICRO SIM STICKING GUIDE

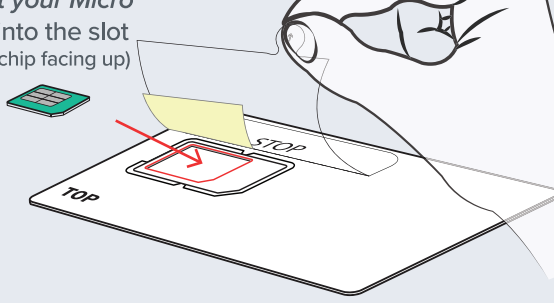
Lift the transparent film *from this edge* until you reach **the STOP line**



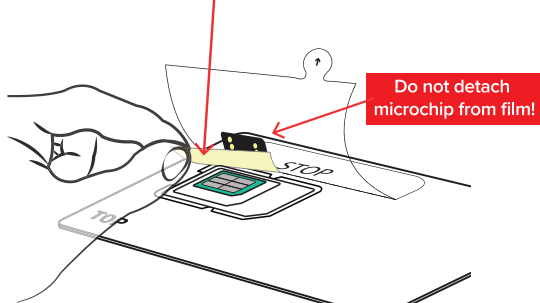
While *lifting the film*, detach the **Micro SIM template**



Insert your Micro SIM into the slot (Gold chip facing up)

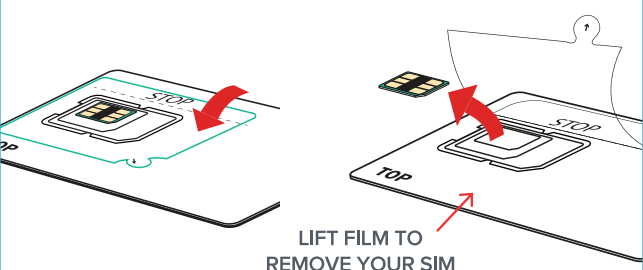


### 7 PEEL OFF **YELLOW TAB**



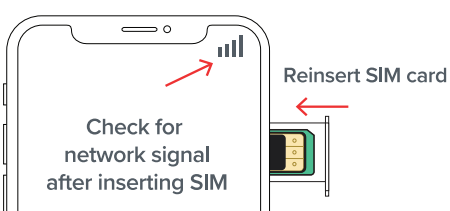
8

## LOWER FILM TO STICK MICROCHIP ON YOUR SIM



9

## INSERT SIM, CHECK NETWORK

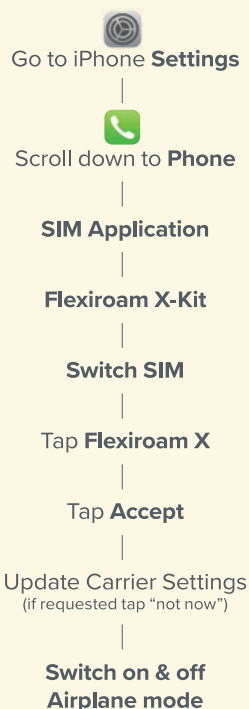


**NOTE:** If there's "NO SIM" indicated or no network signal, restart your phone. If nothing changed after restarting, contact support for assistance.

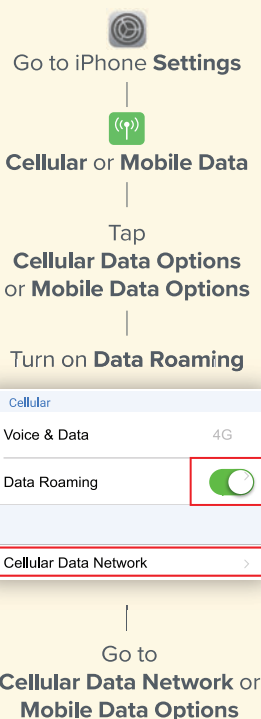


## Apple iOS iPhone Guide

### 10 SWITCH SIM TO FLEXIROAM X

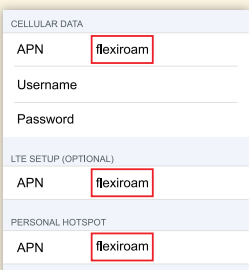


### 11 TURN ON DATA ROAMING



### 12 SETUP APN (ONE TIME ONLY)

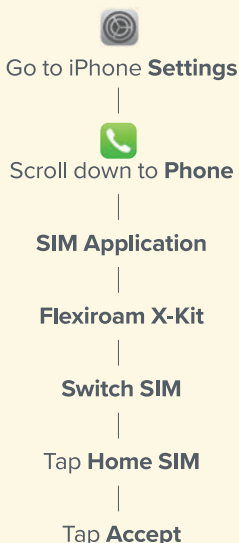
Type **flexiRoam** in all **APN** fields  
(leave the rest as is)



**Note:** For those traveling to USA, key in **pepper** as APN

### 13 SWITCH BACK TO HOME SIM

(TO STOP ROAMING)



### 14 CHECK CONNECTION STATUS

Turn off **Wi-Fi**

Go to **Status** page in the FlexiRoam X app



Click **Refresh**



**CONNECTED**



## Android Guide

**Follow in-app guide for Setup**

Open *FlexiRoam X app*

→ Tap **How to use?** → Tap **First-time Setup**

→ **Follow instructions in the app**

FOR HELP Email [support@flexiRoam.com](mailto:support@flexiRoam.com)